



ELITE
FASTENERS LTD
Specialist Distributors to the Construction Industry

**CONTACT US FOR INFORMATION
AND PRICING**

CALL: 01922 612211

EMAIL: sales@elitefasteners.co.uk

OUR FULL COMPOSITE PANEL RANGE



Using Evolution's state-of-the-art composite panels helps you rise to the challenges of economic construction and modern design needs. Great demands are also placed on the associated fasteners in terms of long-term durability and warranties.

Available In:
Carbon Steel (Sae C1022), Aisi 304/A2
Austenitic Stainless Steel And Powder
Coated Options.



Evolution's self drilling fasteners have been specially developed for composite panel systems.

Dynamic stress caused by tempertaure changes, foot traffic or wind loadings simply won't affect our fastener's performance.

The supporting top thread, thread-free zone and the vital sealing washer ensure a lifetime seal.



EVOLUTION RANGES

KNOW THE DIFFERENCE

ORGANIC COATED

PAGES 4-6



The screws are coated in an Organic coating called **EvoShield**. The main components of the coating system are Zinc and Aluminium flakes bound in an epoxy and melamine resin layer on top of an electroplated zinc layer. This system makes the screws extremely resistant to standard **corrosion** as well as resistant to chemical and effluent attack by acids, alkalines and solvents. This coating is also ACQ (Alkaline Copper Quaternary) resistant.

RANGE DETAILS:

TSBWHT-3
TSBWHT-5
TSBWHT-GP



DESIGNED FOR:	FIXING COMPOSITE PANELS TO STEEL/TIMBER
HEAD STYLE:	HEXAGONAL WITH 12.0mm, 16.0mm OR 19.0mm EPDM WASHER
DRIVE BIT:	5/16" HEXAGONAL
THREAD FORM:	SINGLE COARSE OR SINGLE FINE
COATING:	ORGANIC EVOSHIELD 500
MATERIAL (drill tip):	CARBON STEEL (SAE C1022), HARDENED

BI-METAL STAINLESS STEEL

PAGES 7-9



The screws are "**bi-metal**", which refers to the fact that the self-drilling point and lead threads are made from Carbon Steel (and hardened) and the shank and head of the screw are made from an austenitic grade stainless steel. The two parts of the screw are brazed together then coated in electroplated zinc (which serves only as a storage coating for the carbon steel component.)

RANGE DETAILS:

AISI 304/ A2/A4 Grade Stainless Steel

BMTSBWHT-3
BMTSBWHT-5
A4BMHT-3
A2BMHT-3



DESIGNED FOR:	FIXING COMPOSITE PANELS TO STEEL
HEAD STYLE:	HEXAGONAL WITH 16.0mm EPDM WASHER
DRIVE BIT:	5/16" HEXAGONAL
THREAD FORM:	SINGLE COARSE OR SINGLE FINE
COATING:	ELECTROPLATED (passivated) ZINC
MATERIAL (drill tip):	CARBON STEEL (SAE C1022), HARDENED
MATERIAL (fastener):	STAINLESS STEEL (AISI 304/A2)

LIGHT SECTION COMPOSITE PANEL FASTENERS

 **FOR 1.2mm - 4.0mm STEEL**

TSBWHT

TEK® 3
Composite Panel



CODE	SIZE	WASHER SIZE
12mm Washer		
TSBWHT12-5.5-135-3	5.5 x 135mm	12mm
TSBWHT12-5.5-150-3	5.5 x 150mm	12mm
TSBWHT12-5.5-185-3	5.5 x 185mm	12mm
16mm Washer		
TSBWHT5.5-80-3	5.5 x 80mm	16mm
TSBWHT5.5-105-3	5.5 x 105mm	16mm
TSBWHT5.5-115-3	5.5 x 115mm	16mm
TSBWHT5.5-135-3	5.5 x 135mm	16mm
TSBWHT5.5-150-3	5.5 x 150mm	16mm
TSBWHT16-5.5-185-3	5.5 x 185mm	16mm
19mm Washer		
TSBWHT19-5.5-80-3	5.5 x 80mm	19mm
TSBWHT19-5.5-105-3	5.5 x 105mm	19mm
TSBWHT19-5.5-135-3	5.5 x 135mm	19mm
TSBWHT19-5.5-150-3	5.5 x 150mm	19mm
TSBWHT19-5.5-185-3	5.5 x 185mm	19mm
TSBWHT19-5.5-225-3	5.5 x 225mm	19mm
TSBWHT19-5.5-240-3	5.5 x 240mm	19mm
TSBWHT19-5.5-275-3	5.5 x 275mm	19mm
TSBWHT19-5.5-300-3	5.5 x 300mm	19mm

NEW PARTS

- 1 Super hard, super sharp drill tips ensure fast drill times and eliminates 'walking'
- 2 Unthreaded piece ensures panel surfaces are not deformed
- 3 Sharp tapping threads ensure a low torque fixing every time



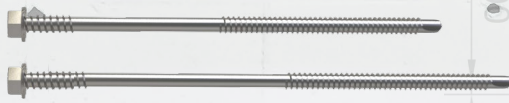
TSHWHT

TEK® 3
Composite Panel
Unwashed



CODE	SIZE
TSHWHT5.5-135-3	5.5 x 135mm
TSHWHT5.5-150-3	5.5 x 150mm

NEW PARTS



- 1 Superior quality carbon steel
- 2 Ideal for colour moulding.
- 3 Consistently high pull-out and shear values



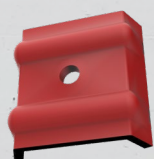
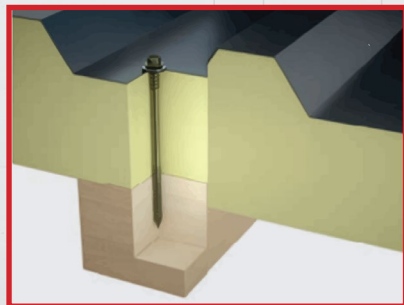
TSBWHT-GP

 **FOR TIMBER**

Composite Panel
FOR TIMBER



CODE	SIZE	WASHER SIZE
TSBWHT6.3-80-GP	6.3 x 80mm	16mm
TSBWHT6.3-100-GP	6.3 x 100mm	16mm
TSBWHT6.3-125-GP	6.3 x 125mm	16mm
TSBWHT6.3-150-GP	6.3 x 150mm	16mm



OUR **STORM WASHER** AVAILABLE WHERE APPLICABLE.

CONTACT US FOR INFORMATION AND PRICING

CALL: 01922 612211
EMAIL: sales@elitefasteners.co.uk

- 1 Type 17 Cutter Point ensures fast advancement in timber and ply
- 2 Aggressive Threadform: Improves penetration and reduces required drive torque
- 3 Unthreaded piece ensure panels are not deformed

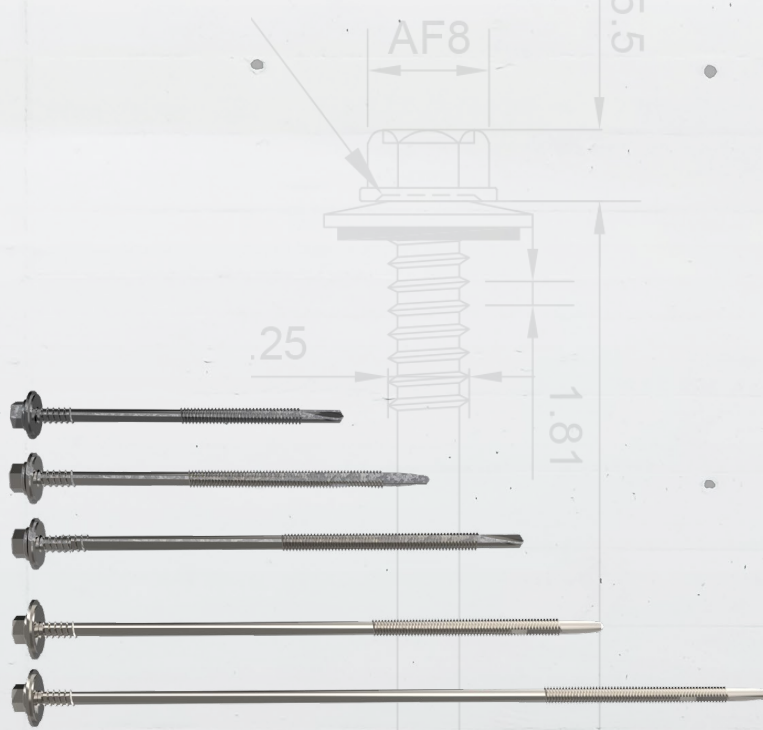
HEAVY SECTION COMPOSITE PANEL FASTENERS



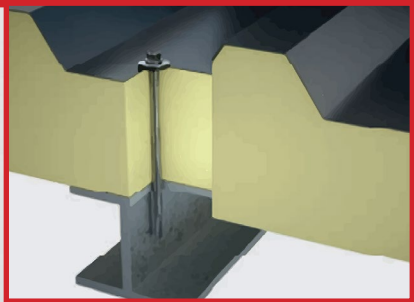
FOR 4.0mm - 12.5mm STEEL

TSBWHT

TEK® 5 Composite Panel		
CODE	SIZE	WASHER SIZE
TSBWHT5.5-85-5	5.5 x 85mm	16mm
TSBWHT5.5-105-5	5.5 x 105mm	16mm
TSBWHT5.5-125-5	5.5 x 125mm	16mm
TSBWHT5.5-150-5	5.5 x 150mm	16mm
19mm Washer		
TSBWHT19-5.5-185-5	5.5 x 185mm	19mm
TSBWHT19-5.5-235-5	5.5 x 235mm	19mm



- 1 Super hard, super sharp drill tips ensure fast drill times and eliminates 'walking'
- 2 Evolution heavy section composite panel easily copes with 12mm steel.
- 3 Precision formed concave fluting gives speedy chip removal
- 4 High thread provides optimal clamping force to top sheet



OUR **STORM WASHER** AVAILABLE WHERE APPLICABLE.

CONTACT US FOR INFORMATION AND PRICING

CALL: 01922 612211
EMAIL: sales@elitefasteners.co.uk

LIGHT SECTION STAINLESS STEEL COMPOSITE PANEL FASTENERS



FOR 1.2mm - 4.0mm STEEL

BI-METAL

BMTSBWHT

A2 Composite Panel		
CODE	SIZE	WASHER SIZE
BMTSBWHT5.5-80-3	5.5 x 80mm	16mm
BMTSBWHT5.5-105-3	5.5 x 105mm	16mm
BMTSBWHT5.5-115-3	5.5 X 115mm	16mm
BMTSBWHT5.5-135-3	5.5 x 135mm	16mm
BMTSBWHT5.5-150-3	5.5 x 150mm	16mm
BMTSBWHT5.5-165-3	5.5 x 165mm	16mm
BMTSBWHT16-5.5-185-3	5.5 x 185mm	16mm
19mm Washer		
BMTSBWHT5.5-185-3	5.5 x 185mm	19mm
BMTSBWHT5.5-235-3	5.5 x 235mm	19mm
BMTSBWHT5.5-275-3	5.5 x 275mm	19mm



- 1 High carbon, high performance drill point ensures superior drilling characteristics, giving accurate drilling every time
- 2 Bi-metal fasteners have a hardened carbon steel drilling point (SAE C1022) brazed to a stainless steel (AISI 304/ EN 1.4301 (A2) or AISI 316/ EN 1.4401 (A4)) body and head
- 3 Superior corrosion protection to ensure long-term fastener integrity

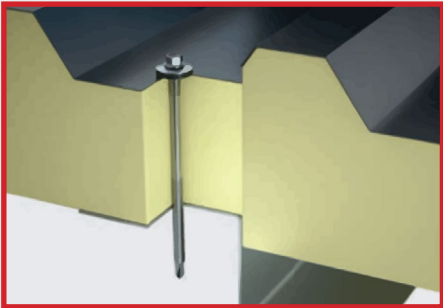
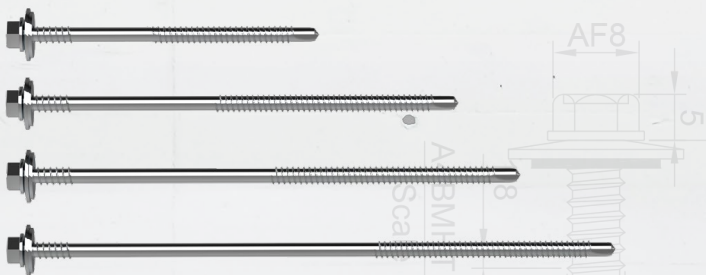


A4BMHT

A4 Composite Panel



CODE	SIZE	WASHER SIZE
A4BMHT105-3	5.5 x 105mm	16mm
A4BMHT135-3	5.5 x 135mm	16mm
A4BMHT150-3	5.5 x 150mm	16mm
A4BMHT185-3	5.5 x 185mm	19mm



- 1 Available unwashed. Ideal for colour moulding.
- 2 Also available with a 12mm washer, ideal for brick tie applications.
- 3 Superior corrosion protection to ensure long-term fastener integrity

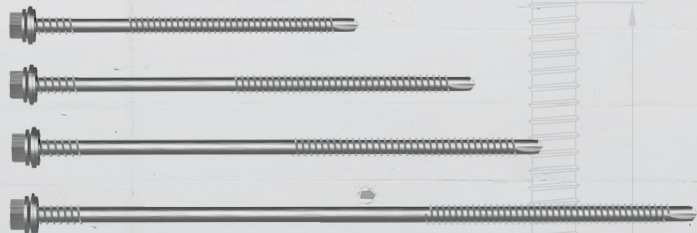


BMHT

A2 Composite Panel

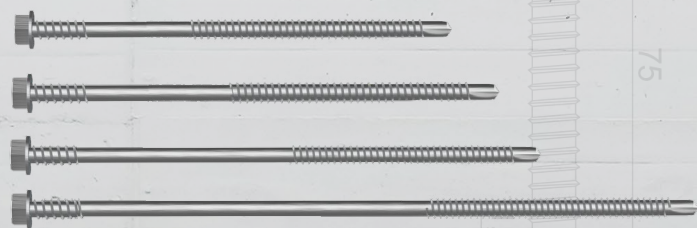


CODE	SIZE	WASHER SIZE
BMHT12-5.5-105-3	5.5 x 105mm	12mm
BMHT12-5.5-135-3	5.5 x 135mm	12mm
BMHT12-5.5-150-3	5.5 x 150mm	12mm
BMHT12-5.5-185-3	5.5 x 185mm	12mm



Without Washer

A2BMHT-5.5-125-3	5.5 x 125mm	N/A
A2BMHT-5.5-135-3	5.5 x 135mm	N/A
A2BMHT-5.5-150-3	5.5 x 150mm	N/A
A2BMHT-5.5-185-3	5.5 x 185mm	N/A



NEW PARTS

HEAVY SECTION STAINLESS STEEL COMPOSITE PANEL FASTENERS



FOR 4.0mm - 12.5mm STEEL

BI-METAL

BMTSBWHT

A2 Composite Panel

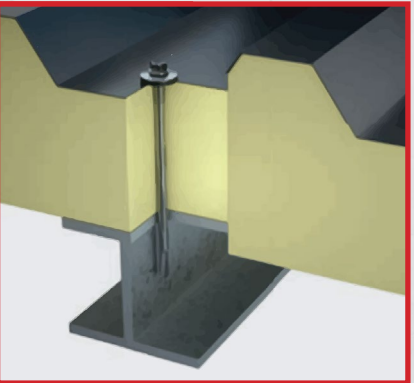


CODE	SIZE	WASHER SIZE
BMTSBWHT5.5-105-5	5.5 x 105mm	16mm
BMTSBWHT5.5-125-5	5.5 x 125mm	16mm
BMTSBWHT5.5-150-5	5.5 x 150mm	19mm
BMTSBWHT5.5-185-5	5.5 x 185mm	19mm
BMTSBWHT5.5-245-5	5.5 x 245mm	19mm



OUR STORM WASHER AVAILABLE WHERE APPLICABLE.

- 1 Carbon steel, high performance drill point ensures superior drilling characteristics giving accurate drilling every time
- 2 Bi-metal fasteners have a hardened carbon steel drilling point (SAE C1022) brazed to a stainless steel (AISI 304/ EN 1.4301 (A2)) body and head
- 3 Superior corrosion protection to ensure long-term fastener integrity



CONTACT US FOR INFORMATION AND PRICING

CALL: 01922 612211
EMAIL: sales@elitefasteners.co.uk

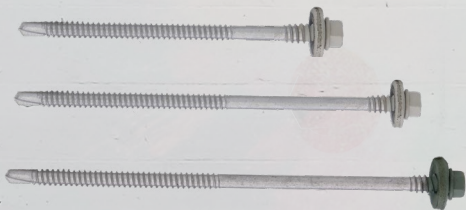


COLOURED POWDER COATED COMPOSITE PANEL FASTENERS


FOR 1.2mm - 4.0mm STEEL

500hr SALTSPRAY COATING

CODE	SIZE
TSBWHT5.5-105-3/0807005	5.5 x105mm
TSBWHT5.5-135-3/0807005	5.5 x 135mm
TSBWHT5.5-150-3/0807005	5.5 x 150mm
TSBWHT5.5-105-3/1602010	5.5 x105mm
TSBWHT5.5-135-3/1602010	5.5 x 135mm
TSBWHT5.5-150-3/1602010	5.5 x 150mm
TSBWHT5.5-105-3/1804005	5.5 x 105mm
TSBWHT5.5-135-3/1804005	5.5 x 135mm
TSBWHT5.5-150-3/1804005	5.5 x 150mm
TSBWHT5.5-105-3/8014	5.5 x105mm
TSBWHT5.5-135-3/8014	5.5 x 135mm
TSBWHT5.5-150-3/8014	5.5 x 150mm
TSBWHT5.5-105-3/7016	5.5 x105mm
TSBWHT5.5-135-3/7016	5.5 x 135mm
TSBWHT5.5-150-3/7016	5.5 x 150mm



GOOSEWING GREY



JUNIPER GREEN



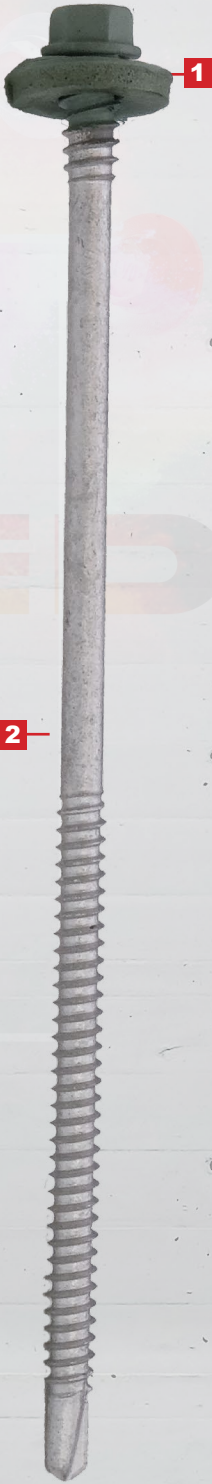
MERLIN GREY



VANDYKE BROWN



ANTHRACITE



- 1
High quality powder coated to reduce UV degradation.
- 2
Advanced Corrosion protection.

CONTACT US FOR INFORMATION AND PRICING

CALL: 01922 612211
EMAIL: sales@elitefasteners.co.uk

The powder coating process

of our coloured tek screws uses finely milled particles of pigment and resin, and these are sprayed onto the fastener using an electrostatic spray process.



Once bonded, the powder is heated and fused before being smoothed into a coating and placed in a curing oven, melting the powder onto the metal, which reduces the risk of chipping, damage or fading.



The coating produces a tough, robust finish and can be used in fixing cladding and architectural panels, outdoor furniture and commercial vehicles.



Optimised Thread Design: For enhanced pull-out performance and smoother tapping.

Coloured cladding and rainscreen has seen a huge increase in popularity in the UK as new products on the market enable ever increasing design possibilities for architects. The façades of office, industrial and high-rise residential buildings have made the UK's constructed landscape more colourful than ever before.

Where visible fasteners are used to fix these materials, they become an important design detail that can either complement or detract from the overall aesthetic of the building.

Evolution's powder-coated fasteners offer a range of colours to support the design and vision of architects.





CONTACT US TODAY

**CONTACT US FOR INFORMATION
AND PRICING**

CALL: 01922 612211

EMAIL: sales@elitefasteners.co.uk



ELITE
FASTENERS LTD
Specialist Distributors to the Construction Industry